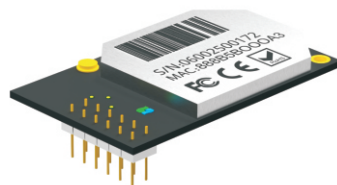
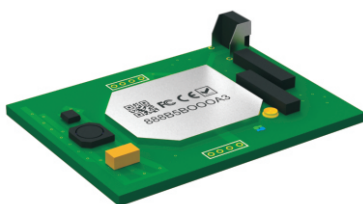


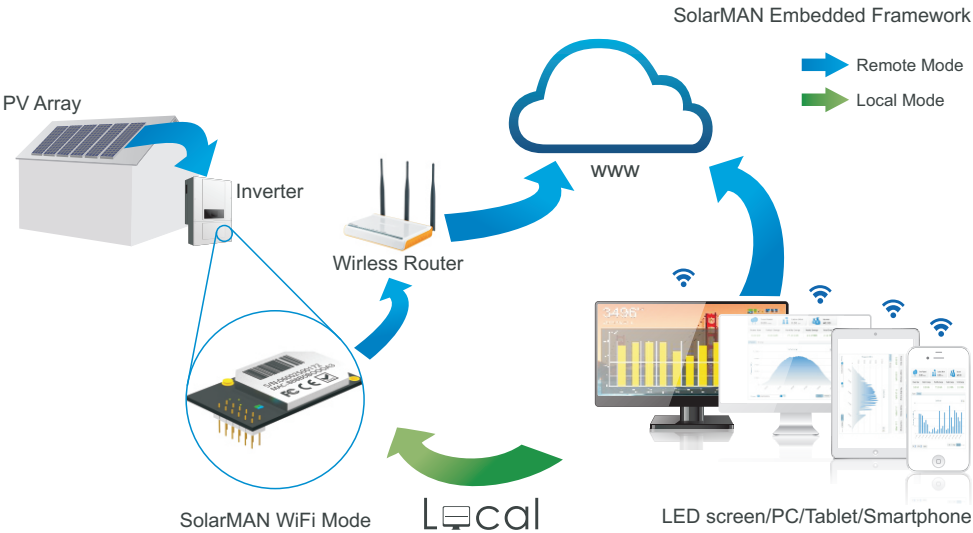
Embedded WiFi Kit Quick Guide



From this page

SolarMAN Embedded WiFi Kit S-W02E/S-W02ES is an embedded data logging module. With its "plug & play" function, the module is embedded in an inverter and can collect information of PV systems from the inverter.

With the integrated WiFi function, the module can connect to router and transmit data to the web server, enabling users to view collected data by logging in the online monitoring portal (www.solarmanpv.com/portal). In addition, users can also get access to the internal web server of the module via WiFi and directly obtain data from the module.



This Quick Guide is intended to assist users in quick configuration and start of Embedded WiFi Kit S-W02E and S-W02ES. If any problems, please refer to corresponding chapters of **User Manual** for details. Configuration interfaces may differ according to different product models.

A: Network setting

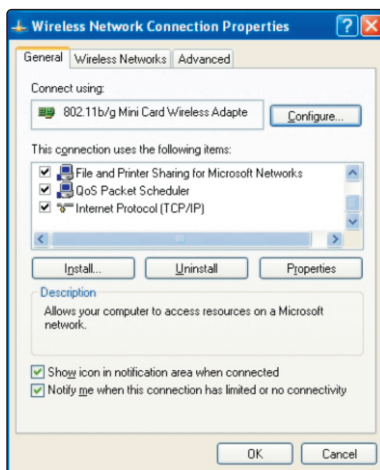
The data logging module is embedded in the inverter. Users can start setting the network of the module once powering on the inverter.

Notice

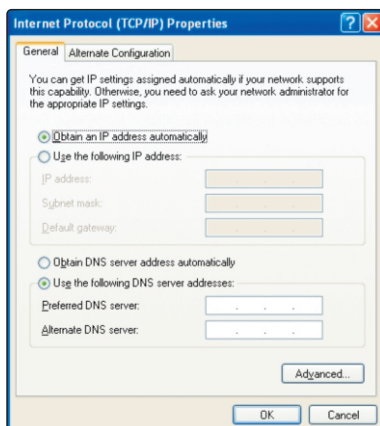
The setting hereinafter is operated with Window XP for reference only. If other operating systems are used, please follow the corresponding procedures.

- 1). Prepare a computer or device, e.g. tablet PC and smartphone, that enables WiFi.
- 2). Obtain an IP address automatically.

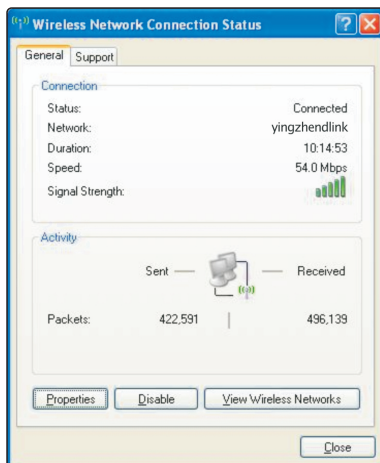
- ① Open **Wireless Network Connection Properties**, double click **Internet Protocol (TCP/IP)**



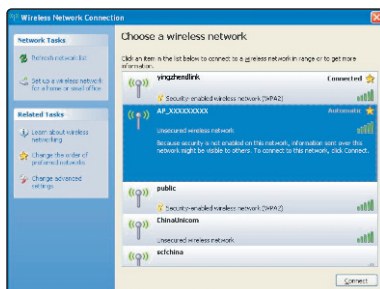
- ② Select **Obtain an IP address automatically**, and click **OK**



③ Set WiFi connection to the module



a). Open wireless network connection and click **View Wireless Networks**



b). Select wireless network of the data logging module, no passwords required as default. The network name consists of **AP** and the **serial number of the product**. Then click **Connect**.



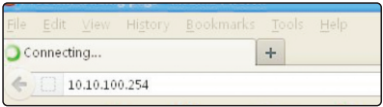
c). Connection successful

Notice

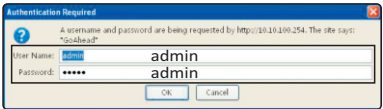
If **AP_(serial number of product)** is not available in the wireless network list, there may be problems in the connection or setting of data logging module. Please refer to 5. Debug of User Manual for troubleshooting.

Before troubleshooting, please check with your inverter provider whether you are allowed to remove the cover on the inverter to trouble shoot the module. If not allowed, please contact customer service.


④ Set parameters of WiFi module



a). Open a web browser, and enter **10.10.100.254**, then fill in username and password, both of which are **admin** as default.



b). In the configuration interface of WiFi module, you can view general information of the module. Follow the setup wizard to start quick setting.



Monitored Analyzed Networked

中文

English

Staus

Wizard

Wireless

Cable

Advanced

Account

Update

Restart

Reset

-Device information

Device serial number

9000000001

Firmware version

S-WO1E V2.0.6F

AP mode

SSID

AP-9000000001

IP address

10.10.100.245

MAC address

AC:CF:23:0F:5F:78

STA mode

Router SSID

AP_SOLAR_PORTAL_M2M_20120615

Signal Quality

0%

IP address

0.0.0.0

MAC address

AC:CF:23:0F:5F:79

-Remote server information

Remote server A

Default

Help

The device can be used as a wireless access point(AP mode) to facilitate users to configure the device, or it can also be used as a wireless information terminal(STA mode) to connect the remote server via wireless router..

If AP mode is turned off, or AP mode is on while STA mode is off, the device can only be connected to remote server through cable network..

Copyright 2012 IGEN Tech Inc.All Rights Reserved.

Ver.4.01.4

① Click **Wizard** to start

Status

Wizard

Wireless

Cable

Advanced

Account

Update

Restart

Reset

Dear users:

Thank you for choosing our device.
 Next, you can follow the setup wizard to complete the network setting step by step;
 or you can select the left menu for detailed setting.

★ Note: Before setting, please make sure that your wireless or cable network is working.

Start

1 2 3 4 5 6

Copyright 2012 IGEN Tech Inc.All Rights Reserved.
 Ver.4.01.4

Help

The setup wizard will assist you to complete the device setting within one minute.

② Click **Start** to continue

Status

Wizard

Wireless

Cable

Advanced

Account

Update

Restart

Reset

Network connection:

● Wireless connection

● Cable connection

Wireless

Enabled

Back

Next

1 2 3 4 5 6

Copyright 2012 IGEN Tech Inc.All Rights Reserved.
 Ver.4.01.4


Help


The STA mode of wireless connection will be turned off by system automatically when you choose cable network connection.

Whether to keep the AP mode of wireless connection or not can be set by turning on or off the wireless function.

③ Select **Wireless connection**, and click **Next**

If you wish to use cable connection, please refer to User Guide for Cable Connection.



中文 |  English

Staus

Wizard

Wireless

Cable

Advanced

Account

Update

Restart

Reset

Network connection:

Wireless connection

Cable connection

Wireless

Enabled

Enabled

Disabled

Back

Next

1

2

3

4

5


6


Copyright 2012 IGEN Tech Inc.All Rights Reserved.
Ver.4.01.4

Help

The STA mode of wireless connection will be turned off by system automatically when you choose cable network connection.

Whether to keep the AP mode of wireless connection or not can be set by turning on or off the wireless function.



中文 |  English

Staus

Wizard

Wireless

Cable

Advanced

Account

Update

Restart

Reset

Please select your current wireless network:

Refresh

Add wireless network manually:

Network name(SSID)
(Note: case sensitive)

AP_SOLAR_PORTAL

Disable

Back

Next

1

2

3

4

5

6


Copyright 2012 IGEN Tech Inc.All Rights Reserved.
Ver.4.01.4


Help

This step will help to connect the device to your desired WLAN. If you do not find your wireless router on the left list, please refresh several times or add it manually.

Please check your wireless router for the right encryption method and encryption algorithm.

④ Click **Refresh** to search available wireless networks, or add it manually



中文 |  English

Staus

Wizard

Wireless

Cable

Advanced

Account

Update

Restart

Reset

Please select your current wireless network:

● CMCC-AUIO	5e:ac:0a:2c:bc:3f	10%	1
● CMCC	4e:ac:0a:2c:bc:3b	10%	1
● CMCC	4c:ac:0a:2b:04:9f	76%	1
● CMCC-AUIO	5e:ac:0a:28:8b:fe	10%	1
● CMCC-AUIO	5e:ac:0a:2b:04:9f	70%	1
● CMCC	4c:ac:0a:28:8b:fe	10%	1
● d5studio	e0:05:c5:b2:7b:5a	15%	2
● anklam	90:94:e4:3c:61:1c	70%	2
● dalai365	00:21:27:46:c5:98	29%	3
● SOLARMAN AP	ac:cf:23:ff:02:9c	100%	3
● yingzhendlink	ac:6c:9f:04:b3:2c	96%	6
● keysense	00:21:27:5c:06:98	5%	6
● CMCC-AUIO	5e:ac:0a:26:8b:f7	5%	6

[Refresh](#)

Help

This step will help to connect the device to your desired WLAN. If you do not find your wireless router on the left list, please refresh several times or add it manually.

Please check your wireless router for the right encryption method and encryption algorithm.

Add wireless network manually:

Network name(SSID) yingzhendlink

(Note: case sensitive)

Encryption method WPA2PSK

Encryption algorithm TKIP

Back
Next

1
2
3
4
5
6

Copyright 2012 IGEN Tech Inc.All Rights Reserved.
Ver.4.01.4

⑤ Select the wireless network you need to connect, then click **Next**

Notice

If the signal strength (RSSI) of the selected network is <10%, which means unstable connection, please adjust the antenna of the router, or use a repeater to enhance the signal.

SolarMAN
Monitored Analyzed Networked

中文 | English

Staus

Wizard

Wireless

Cable

Advanced

Account

Update

Restart

Reset

Please enter the wireless network password:

Password(1-32 bytes)
(Note: case sensitive)
Re-enter password

☐ Show Password

Back

Next

1

2

3

4

5

6

Copyright 2012 IGEN Tech Inc.All Rights Reserved.
Ver.4.01.4

Help

Please make sure you have entered the correct password.

⑥ Enter the password for the selected network, then click **Next**

SolarMAN
Monitored Analyzed Networked

中文 | English

Staus

Wizard

Wireless

Cable

Advanced

Account

Update

Restart

Reset

Please fill in the following information:

Obtain an IP address automatically	Enable
IP address	0.0.0.0
Subnet mask	0.0.0.0
Gateway address	0.0.0.0
DNS server address	

Back

Next

1

2

3

4

5

6

Copyright 2012 IGEN Tech Inc.All Rights Reserved.
Ver.4.01.4

Help

Most systems support the function of DHCP to obtain IP address automatically. Please add it manually if your router does not support such function.

⑦ Select **Enable** to obtain an IP address automatically, then click **Next**

SolarMAN
Monitored Analyzed Networked

中文

 English

Status
Wizard
 Wireless
 Cable
 Advanced
 Account
 Update
 Restart
 Reset

Congratulations, setting successful!

Please log in our management portal to register, and start monitoring and managing your PV system.

After clicking the "ok" button,the system will restart.

Back
OK

1
2
3
4
5
6

Help

After clicking "OK", the system will restart automatically.

Please wait for a while during restart.

Copyright 2012 IGEN Tech Inc.All Rights Reserved.
 Ver.4.01.4

⑧ If setting is successful, the above page will display. Click **OK** to restart.

SolarMAN
Monitored Analyzed Networked

中文

 English

Status
Wizard
 Wireless
 Cable
 Advanced
 Account
 Update
 Restart
 Reset

Rebooting successful!

You can manually close this page; or reconnect the network of the device and re-login the [configuration interface](#).

Help

After clicking "OK", the system will restart automatically.

Please wait for a while during restart.

Copyright 2012 IGEN Tech Inc.All Rights Reserved.
 Ver.4.01.4

⑨ If restart is successful, the above page will display.

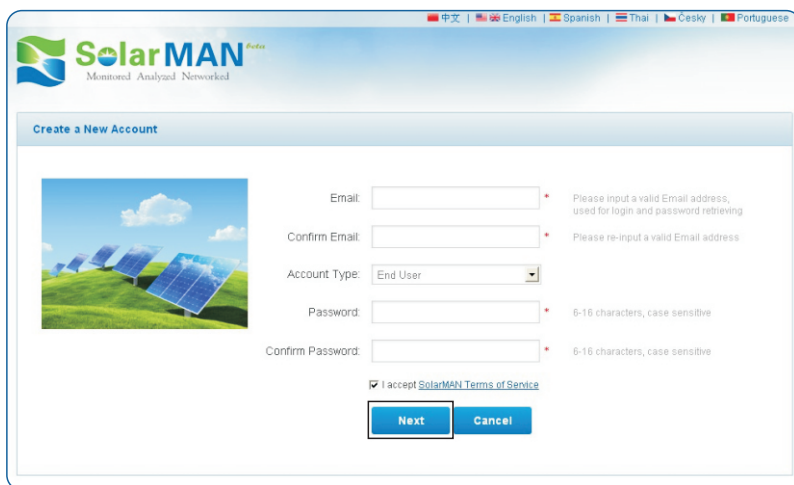
B: Register on SolarMAN Portal

Open a web browser and visit the portal website: <http://www.solarmanpv.com/portal> .

Supported browsers: Internet Explorer 8+, Google Chrome 10+, Firefox 9+, Safari 4+



① Click **Register Now**




② Fill in your email address and password, then click **Next**

Create a New Account

Site Name
*Maximum 20 Letters

Upload Image
* Maximum file size: 4Mt.
File types: .jpg,.png, .bmp,.gif, .jpeg,.jpg



Country
*

Province/State
*

City
*

Street
Locate Your Site On Map

ZIP Code

Timezone

Number Format

System Size(kWp)
*

Feed-in Tariff(FIT)

*

Panel Type

Inverter Type

Description

☒ Make This Site Public

Registration

Datalogger S/N
*

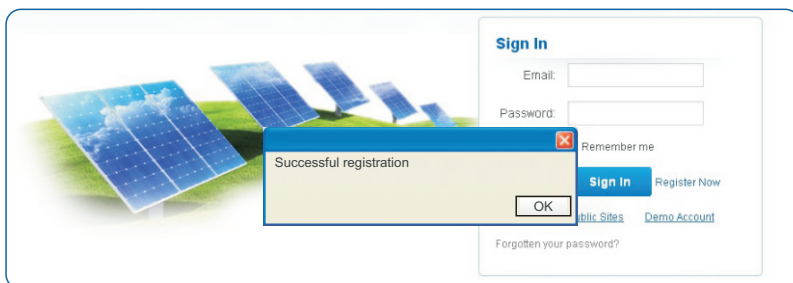
Installer

Contact

Name

Phone

③ Fill in the information as required, then click **Complete**



- ④ If registration is successful, the above page will display. Click **OK** to return to the homepage of the portal.

C: Log in SolarMAN Portal to manage power station

After successful registration, open the login page of SolarMAN Portal, and input your E-mail and password to access the monitoring system and start monitoring and management of power plants.



The login page features the SolarMAN logo and a background image of solar panels. The 'Sign In' section includes fields for Email and Password, a 'Remember me' checkbox, and a 'Sign In' button. There are also links for 'Register Now', 'Public Sites', and 'Demo Account'. A link for 'Forgotten your password?' is located at the bottom.

Notice

If users access the monitoring system for the first time within ten minutes after successful registration, please check the "Real Time" interface . If there are data shown in the Real Time interface, network setting of data logger and other connection are deemed successful.



SolarMAN

Monitored Analyzed Networked

Real Time

service@sofarpv.com

Logout

Home

My Site

Public Sites

Account

Sofar20000TL 3phase

Overview

Real Time

History

Alert

Report

Settings

Inverter

nearby 28.34°C

☁️ 0.5 Light rain shower 28.33°C

☁️ 0.6 Moderate or heavy rain shower 28.33°C

🔔 Alerts: 1 items

⏪ ⏩ Page 1 of 1 ⏮ ⏭

No.	Inverter S/N	DC Input			AC Output				Total Energy(kWh)	Temperature(°C)		
		Channel	Voltage(V)	Current(A)	Phase	Voltage(V)	Current(A)	Power(W)			Frequency(Hz)	
1	SC1ES320E30001	PV1	577.8	8.9	L1	230.8	10.9	7640	49.96	5471	54.0	20
		PV2	577.7	4.4	L2	235.4	10.8	0				
		PV3	0.0	0.0	L3	236.6	10.9	0				

D: Trouble shootings

Please refer to User Manual 5.3.

E: Trouble shootings

If any technical problems, please contact us, with the following information in hand:

- ※ Device model
- ※ Serial number of product

IGEN Tech. Co., Ltd.

Add: A1-405, Tian'an iPark, No.228 Linghu Avenue, Wuxi, Jiangsu
Province, P.R.China 214028

Tel: +86-510-8181 6208

Fax: +86-510-8181 6208

E-mail: tech@solarmanpv.com